



surelight

Neon light SQ Range Specification

NE-SQ-RGB-VB



Table of Contents

Introduction	03
1. Specifications & Parameters	04
1.1 Dimensions of Light	
1.2 Technical Parameters	
1.3 Optical Parameters	
2. Functions & Features	05
2.1 Product Features	
2.2 Minimum Bend Diameter	
3. Types of Connector	05
3.1 Injection-moulded Connector	
3.2 Dual Injection-moulded Connector	
3.3 Anti-wicking Ferrule	
3.4 Male & Female Connector	
4. Mounting Profile	09
4.1 Standard Aluminum Profile	
4.2 Plastic Profile	
4.3 Self-locking Aluminum Profile Ver	
4.4 Self-locking Aluminum Profile Ver. 2	
4.5 Plastic & Aluminum Combination Profile	
4.6 Cable Exit Oriented Aluminum Profile	
(Applicable to Injection-moulded Connector Only)	
4.7 Corner Aluminum Profile	
(Applicable to Injection-moulded Connector Only)	
4.8 Curve Stainless Steel Profile	
5. Packaging	14
6. Appendix	15
6.2 Certificate	
6.3 Third Party Test Report	
6.4 Reliability Test of Light	
6.5 Figures of Typical Characteristics	
6.6 Wavelength of Colour Light	
6.7 Loading Chart	

Introduction

NE-SQ-RGB-VB is a new member of the Artist of Light series with Nichia RGB LED to achieve your desired artistic effect, which employs constant current design.

NE-SQ-RGB-VB is UL/cUL, CE, TUV and RoHS compliant. Moreover, it has passed environmental resistance, optical, mechanical and electrical tests in our lab under the support of advanced experimental equipments and technology to ensure it meets the requirements of harsh environments. Also it has passed relevant tests for third party inspection authority.

Fully encapsulated in the flexible PVC chamber by utilizing consummate extrusion technology, assembled with injection-moulded connectors to achieve IP68 protection, easy for installation and applicable for various circumstances.

NE-SQ-RGB features dynamic colour effects with smooth colour-mixing illumination and small bend diameter in wave bending shape.

Applications:

1. Outdoor or Indoor Contour/Border Lighting
2. Architectural Outline/Decorative Lighting
3. Cove/Accent Lighting
4. Signage/Statue
5. Display Lighting

1. Specifications & Parameters



Beam
Angle 10%



Bending
Diameter



Flame
Resistant



UV
Resistant



Solvents
Resistant



Saltwater
Resistant



IP 68
Protection

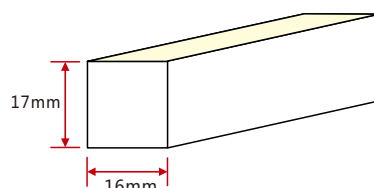
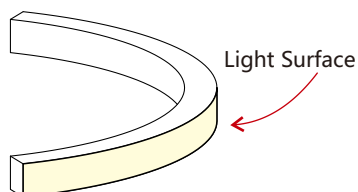


IK08
Protection



3
Years
Warranty

1.1 Dimensions of Light



Note: Unless otherwise stated, the tolerance of the light is $\pm 0.3\text{mm}$.

1.2 Technical Parameters

Technical Parameters

Article No.	NE-SQ-RGB-VB
Colour	RGB
Working Voltage	DC24V
Rated Power/m	12w
LED Qty/m	72LEDs
LED Distance	13.9mm
Min. Cutting Unit	6LEDs (1unit)
Min. Cutting Length	83.3mm(1unit)
Continuous Length	5m
Weight/m	325g
Storage Temperature	-20~60°C
Environmental Working Temperature	-20~45°C
Environmental Installation Temperature	0~45°C
IP Rating	IP68

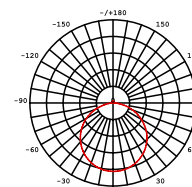


1.3 Optical Parameters

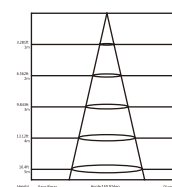
Photometric Data

Article No.	NE-SQ-RGB-VB		
LED Type	SMD		
Beam Angle 10%	160°		
Color	CCT/Wavelength	Lumen/m	Power/m
Red		>40lm	
Green		>120lm	
Blue		>16lm	
White(R+G+B)	/	>176lm	12w

Candle power distribution



Illuminance Characteristics

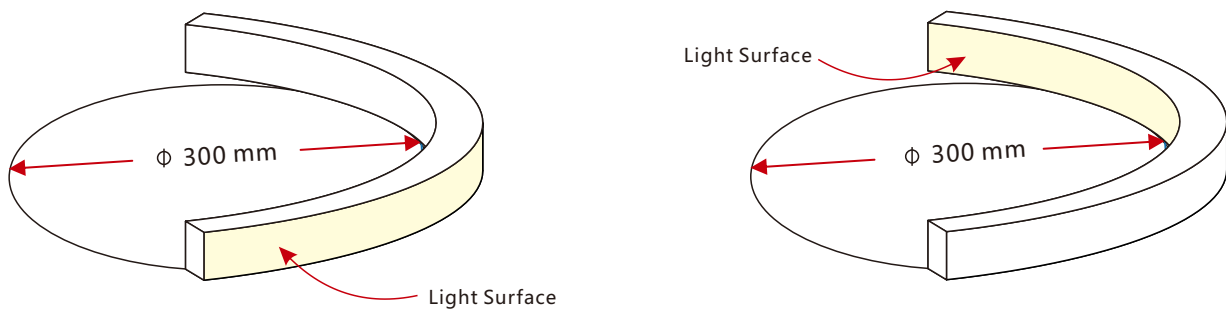


2. Functions & Features

2.1 Product Features

1. High quality Nichia SMD LED chip.
2. UV & flame resistant construction(PVC).
3. Extremely flat profile for slimline projects.
4. Perfect uniform & even light source with invisible light dots.
5. High illumination.
6. Easily to be installed.
7. High IP rating (IP68).
8. The product IP rate is ultimately in line with properly applied IP rated connectors.
9. Continuous length up to 5m by powering one end.
10. Environmentally friendly & energy efficient.
11. Automated production, high reliability & long warranty.
12. 5 year life span.

2.2 Minimum Bend Diameter



The light can only be bent along the light surface. Do not bend smaller than allowed minimum bend diameter.

3. Types of Connector

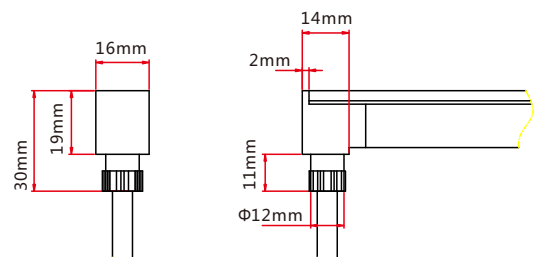
3.1 Injection-moulded Connector

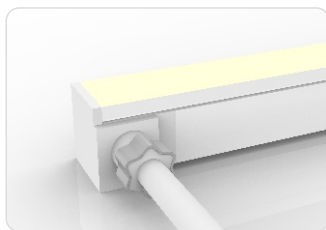
Note: Unless otherwise stated, the tolerance of the connector is $\pm 0.5\text{mm}$.



Injection-moulded Front Connector (bottom)

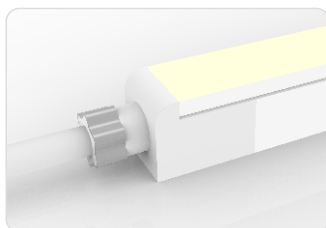
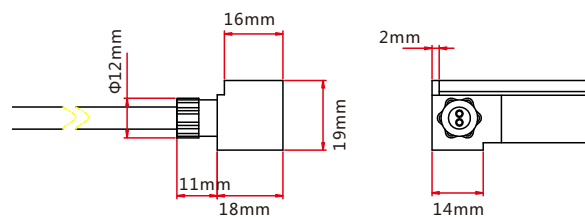
Connects light to power supply with pre-installed bottom feed cable IP67. Available in 0.3m, 1m, 3m, 5m, 10m, 15m, 20m lengths.





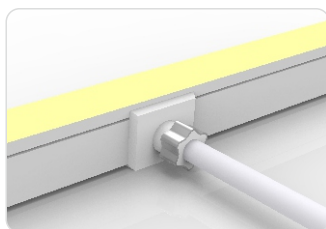
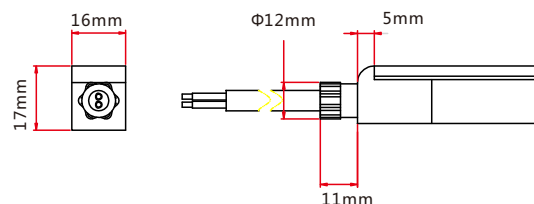
Injection-moulded Front Connector (side)

Connects light to power supply with pre-installed side feed cable, IP67. Available in 0.3m, 1m, 3m, 5m, 10m, 15m, 20m lengths.



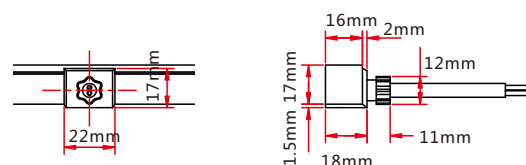
Injection-moulded Front Connector (end)

Connects light to power supply with pre-installed end feed cable, IP67. Available in 0.3m, 1m, 3m, 5m, 10m, 15m, 20m lengths.



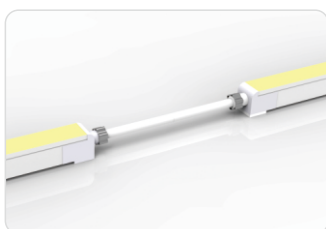
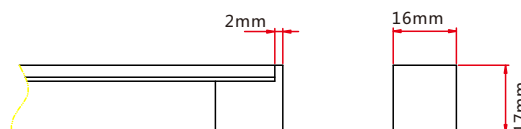
Injection-moulded Middle Feed Connector

Connects light to power supply with pre-installed end feed cable, IP67. Available in 0.3m, 1m, 3m, 5m, 10m, 15m, 20m lengths.



Injection-moulded End Cap

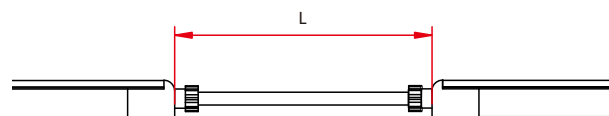
Pre-installed termination protection of the light, IP67.



Injection-moulded Jumper

Connects two pieces of lights together with a flexible cable. IP67 Injection-moulded connector. L available in 0.3~1m.

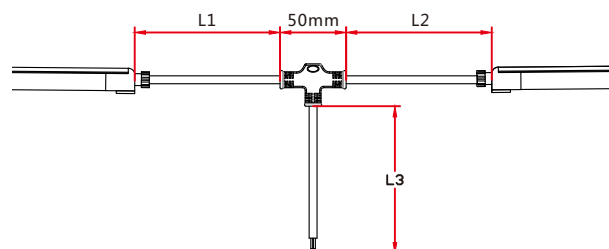
Maximum 8 Jumpers in 20m
Maximum 4 Jumpers in 10m



Injection-moulded T-feed

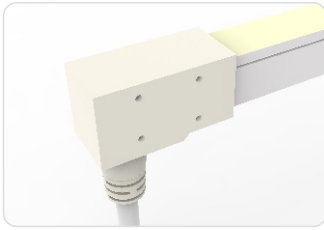
Connects two pieces of lights together with a T joint, energized from middle. IP67 Injection-moulded connector. L1 and L2 available in 0.15~0.5m. L3 available in 0.3~3m.

Maximum 8 T-feeds in 20m
Maximum 4 T-feeds in 10m



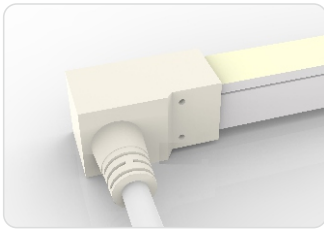
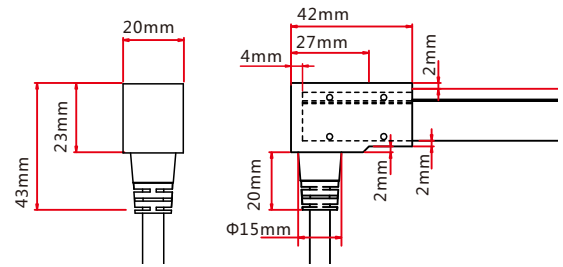
3.2 Dual Injection-moulded Connector

Note: Unless otherwise stated, the tolerance of the connector is $\pm 0.5\text{mm}$.



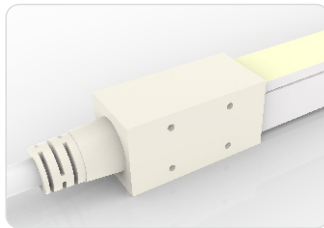
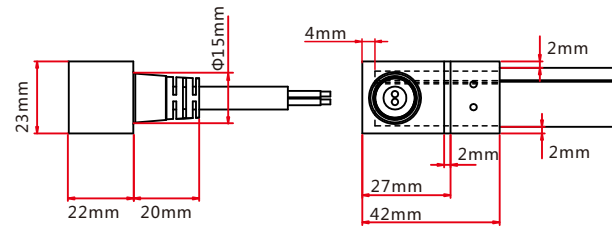
Dual Injection-moulded Front Connector (bottom)

Connects light to power supply with pre-installed bottom feed cable, IP68. Cable length available in 0.3m, 1m, 3m, 5m, 10m, 15m, 20m.



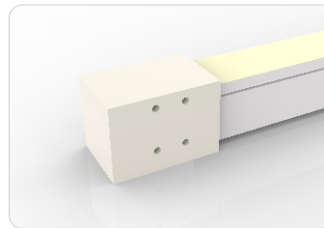
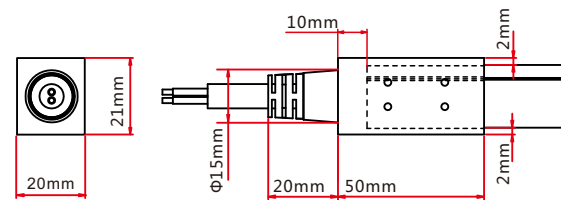
Dual Injection-moulded Front Connector (side)

Connects light to power supply with pre-installed side feed cable, IP68. Cable length available in 0.3m, 1m, 3m, 5m, 10m, 15m, 20m.



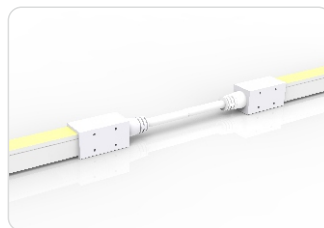
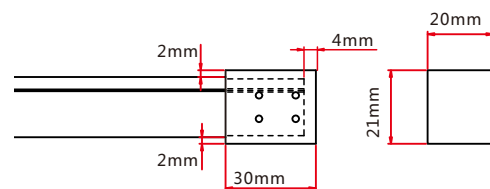
Dual Injection-moulded Front Connector (top end)

Connects light to power supply with pre-installed end feed cable, IP68. Cable length available in 0.3m, 1m, 3m, 5m, 10m, 15m, 20m.



Dual Injection-moulded End Cap

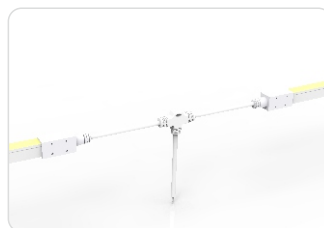
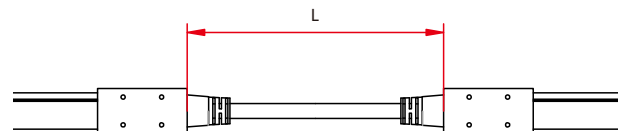
Pre-installed termination protection of the light, IP68.



Dual Injection-moulded Jumper

Connects two pieces of lights together with a flexible cable. IP68 Dual Injection-moulded connector. L available in 0.3~1m.

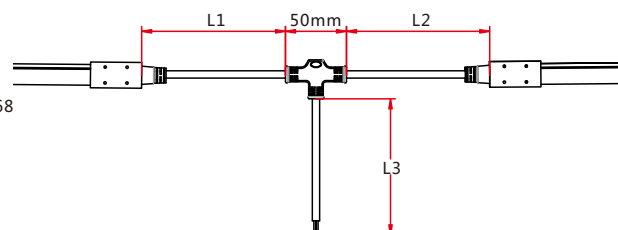
Maximum 8 Jumpers in 20m
Maximum 4 Jumpers in 10m



Dual Injection-moulded T-feed

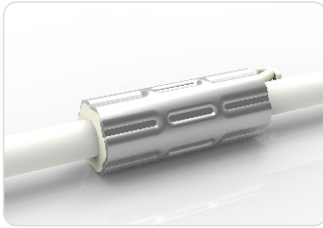
Connects two pieces of lights together with a T-joint, energized from middle. IP68 Dual Injection-moulded connector. L1 and L2 available in 0.15~0.5m. L3 available in 0.3~3m.

Maximum 8 T-feeds in 20m
Maximum 4 T-feeds in 10m



3.3 Anti-wicking Ferrule

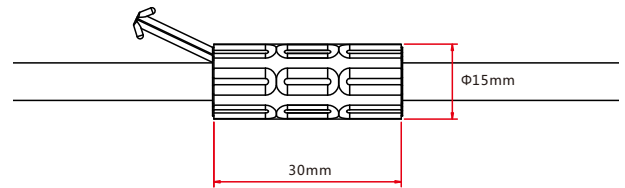
Note: Unless otherwise stated, the tolerance is $\pm 0.5\text{mm}$.



Anti-wicking Ferrule

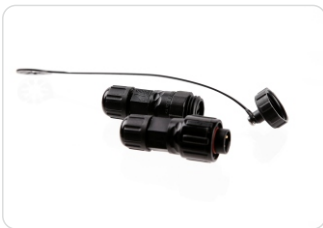
The anti-wicking ferrule is located at 115mm ($\pm 5\text{mm}$ tolerance) from the connector on the cable.

For protection against water ingress from inside of cable wire and hence damage the light.



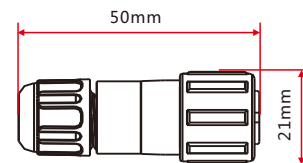
3.4 Male & Female Connector

Note: Unless otherwise stated, the tolerance is $\pm 2\text{mm}$.



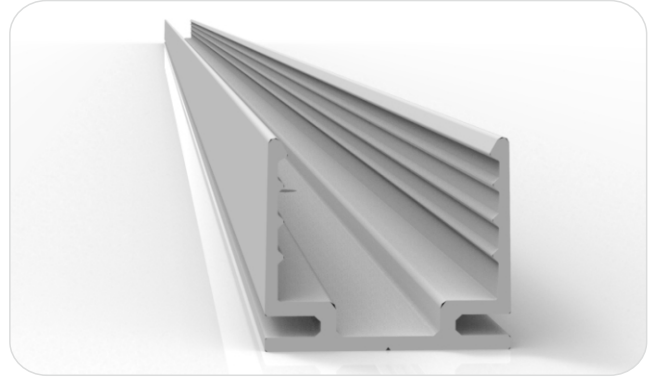
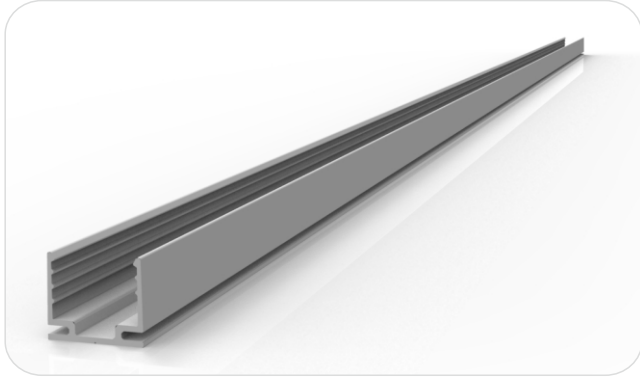
Male & female Connector

For plug and play cable junction, DIY or Pre-installed connector, IP68

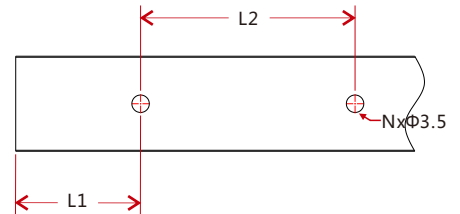
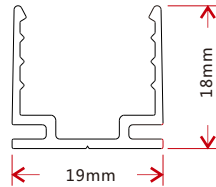
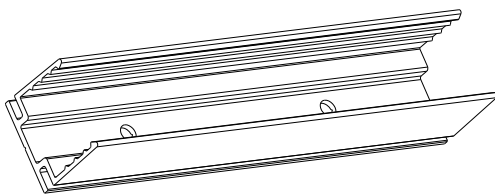


4. Mounting Profile

4.1 Standard Aluminum Profile



Dimensions Note: Unless otherwise stated, the tolerance of the profile is $\pm 0.5\text{mm}$.

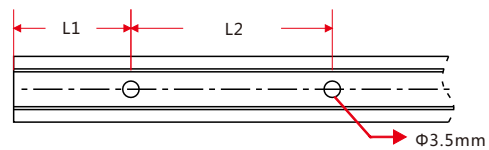
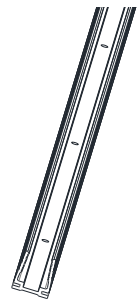
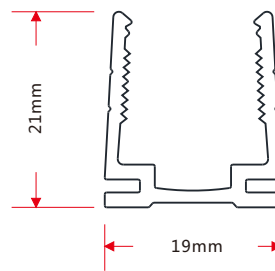


Model	W*H(mm)	Standard Length (mm)	L1 (mm)	L2 (mm)	Screw Hole (mm)	Hole Number	For Product
NE-SQ-RGB-CH	19*18	35	17.5	/	Φ3.5	1	SQ
		500	50	200	Φ3.5	3	SQ
		1000	100	200	Φ3.5	5	SQ
		2000	100	200	Φ3.5	10	SQ

4.2 Plastic Profile

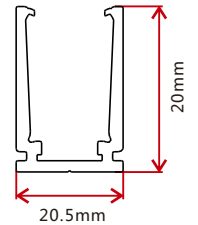
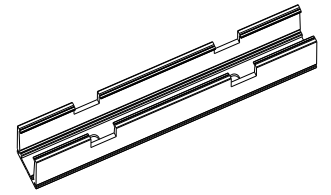
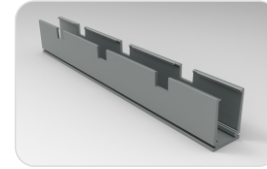
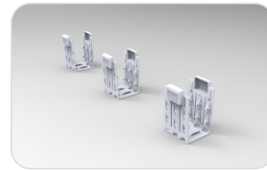
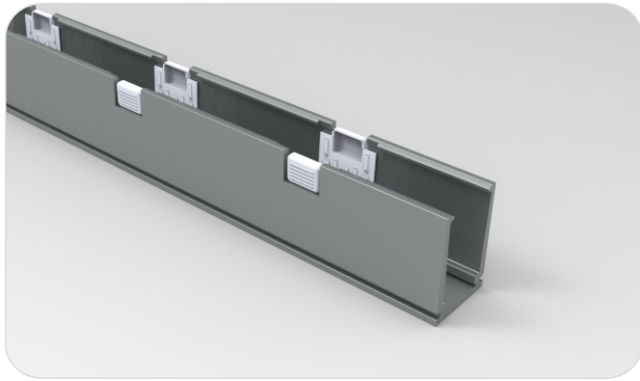


Note: Unless otherwise stated, the tolerance of the profile is $\pm 0.5\text{mm}$.

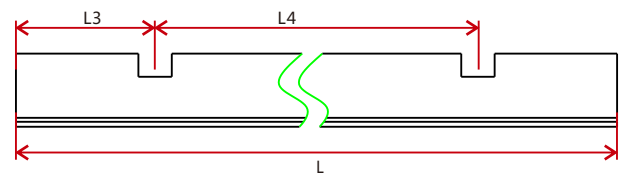
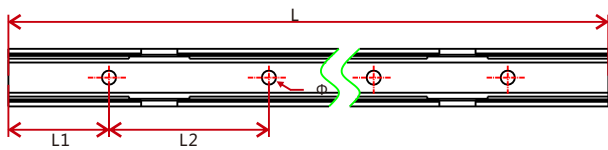


Model	W*H(mm)	Standard Length (mm)	L1 (mm)	L2 (mm)	Screw Hole (mm)	Hole Number	For Product
NE-SQ-RGB-CH	19*21	500	50	200	Φ3.5	3	SQ
		1000	100	200	Φ3.5	5	SQ
		2000	100	200	Φ3.5	10	SQ

4.3 Self-locking Aluminum Profile (Using with the Clip)

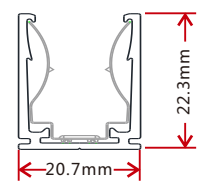
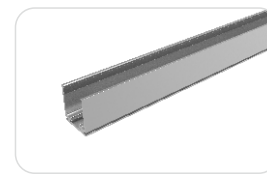


Note: Unless otherwise stated, the tolerance of the profile is $\pm 0.5\text{mm}$.

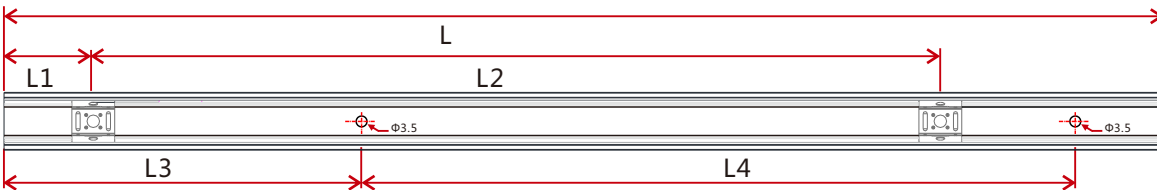


Model	W*H(mm)	Standard Length(mm)	L1(mm)	L2(mm)	L3(mm)	L4(mm)	Hole Screw(mm)	Hole Number	Clip Number
NE-SQ-RGB-CH	20.5*20	35	17.5	25	5	/	$\Phi 3.5$	2	1
		500	50	200	75	350	$\Phi 3.5$	3	2
		1000	100	200	150	350	$\Phi 3.5$	5	3
		2000	100	200	125	350	$\Phi 3.5$	10	6

4.4 Self-locking Aluminum Profile Ver. 2 (Using with the Clip)

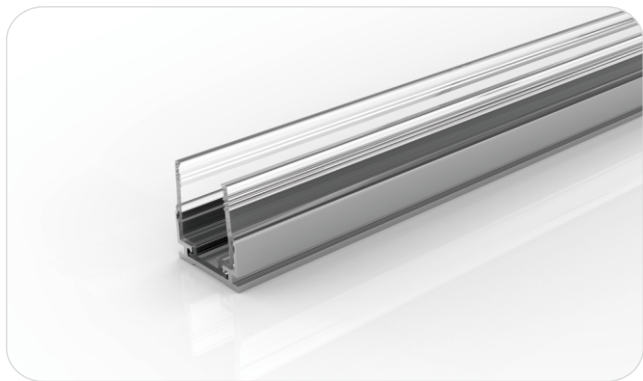


Note: Unless otherwise stated, the tolerance of the profile is $\pm 0.5\text{mm}$.

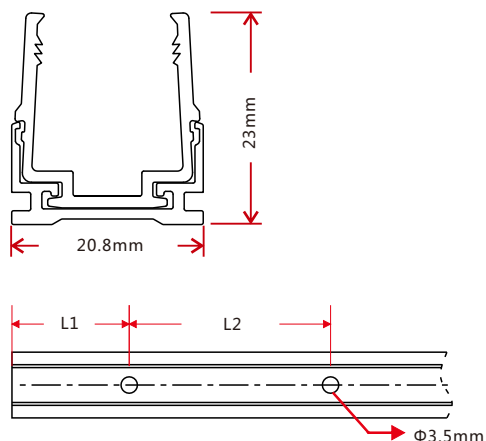


Model	W*H(mm)	Standard Length(mm)	L1(mm)	L2(mm)	L3(mm)	L4(mm)	Hole Screw(mm)	Hole Number	Clip Number
NE-SQ-RGB-CH	20.7*22.3	35	17.5	/	5	25	$\Phi 3.5$	2	1
		500	25	150	50	200	$\Phi 3.5$	3	4
		1000	25	190	100	200	$\Phi 3.5$	5	6
		2000	25	195	100	200	$\Phi 3.5$	10	11

4.5 Plastic & Aluminum Combination Profile



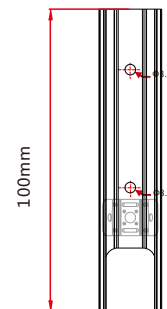
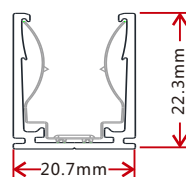
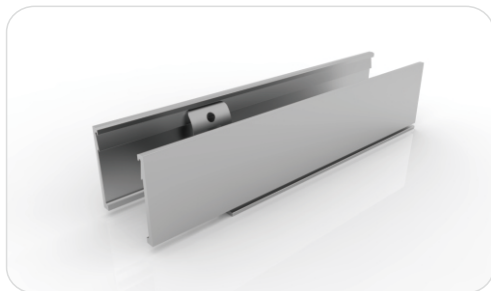
Note: Unless otherwise stated, the tolerance of the profile is $\pm 0.5\text{mm}$.



Model	W*H(mm)	Standard Length (mm)	L1 (mm)	L2 (mm)	Screw Hole (mm)	Hole Number	For Product
NE-SQ-RGB-CH	20.8*23	35	17.5	/	Φ3.5	1	SQ
		500	50	200	Φ3.5	3	SQ
		1000	100	200	Φ3.5	5	SQ
		2000	100	200	Φ3.5	10	SQ

4.6 Cable Exit Oriented Aluminum Profile (Applicable to Injection-moulded Connector Only)

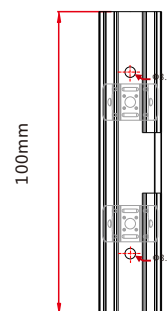
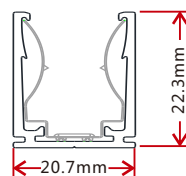
4.6.1 Self-locking Aluminum Profile Ver. 2, Bottom Feed (Using with the Clip)



Model: NE-SQ-RGB-CH

Note: Unless otherwise stated, the tolerance of the profile is $\pm 0.5\text{mm}$.

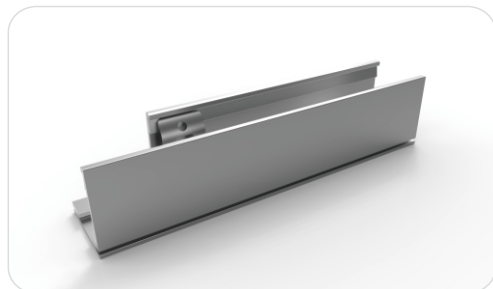
4.6.2 Self-locking Aluminum Profile Ver. 2, Middle Feed (Using with the Clip)



Model: NE-SQ-RGB-CH

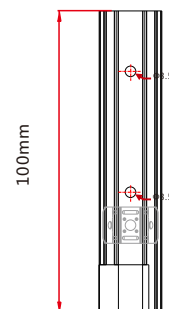
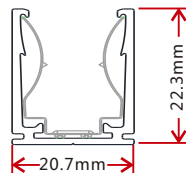
Note: Unless otherwise stated, the tolerance of the profile is $\pm 0.5\text{mm}$.

4.6.3 Self-locking Aluminum Profile Ver. 2, Side Feed From Left (Using with the Clip)



Model: NE-SQ-RGB-CH

Note: Unless otherwise stated, the tolerance of the profile is $\pm 0.5\text{mm}$.

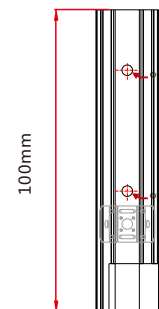
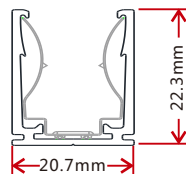


4.6.4 Self-locking Aluminum Profile Ver. 2, Side Feed From Right (Using with the Clip)



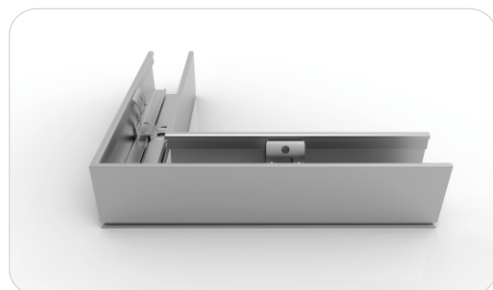
Model: NE-SQ-RGB-CH

Note: Unless otherwise stated, the tolerance of the profile is $\pm 0.5\text{mm}$.



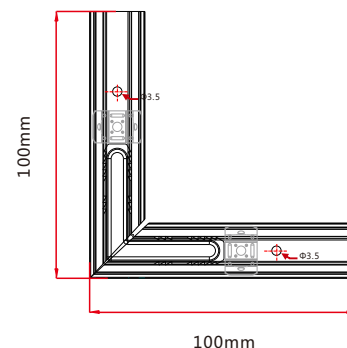
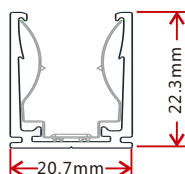
4.7 Corner Aluminum Profile (Applicable to Injection-moulded Connector Only)

4.7.1 L Shape Self-locking Aluminum Profile Ver. 2 (Using with the Clip)



Model: NE-SQ-RGB-CH

Note: Unless otherwise stated, the tolerance of the profile is $\pm 0.5\text{mm}$.

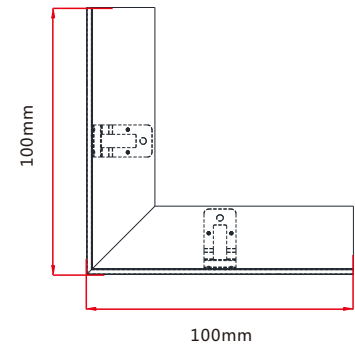
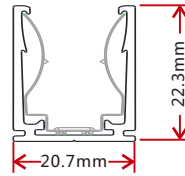


4.7.2 Inward L Shape Self-locking Aluminum Profile Ver.2 (Using with the Clip)

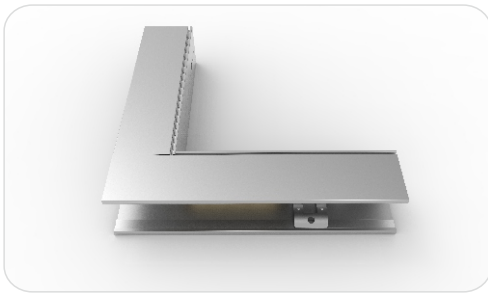


Model: NE-SQ-RGB-CH

Note: Unless otherwise stated, the tolerance of the profile is $\pm 0.5\text{mm}$.

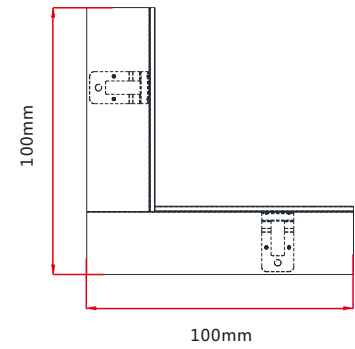
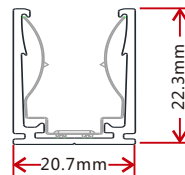


4.7.3 Outward L Shape Self-locking Aluminum Profile Ver.2 (Using with the Clip)

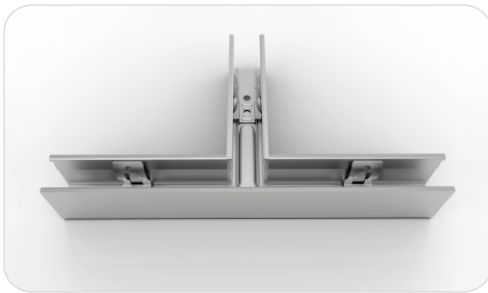


Model: NE-SQ-RGB-CH

Note: Unless otherwise stated, the tolerance of the profile is $\pm 0.5\text{mm}$.

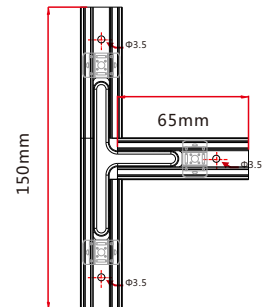
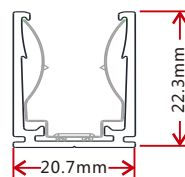


4.7.4 T Shape Self-locking Aluminum Profile Ver. 2 (Using with the Clip)



Model: NE-SQ-RGB-CH

Note: Unless otherwise stated, the tolerance of the profile is $\pm 0.5\text{mm}$.

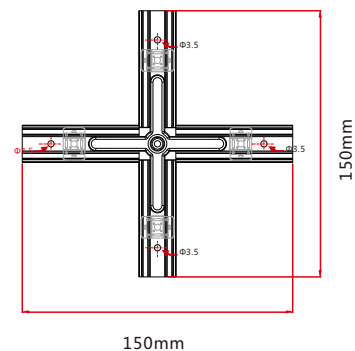
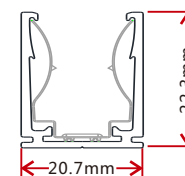


4.7.5 X Shape Self-locking Aluminum Profile Ver. 2 (Using with the Clip)

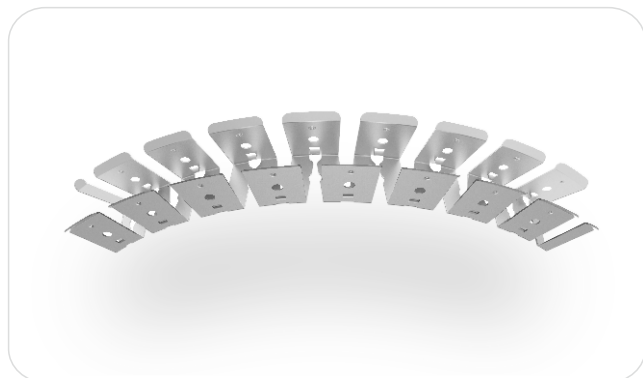


Model: NE-SQ-RGB-CH

Note: Unless otherwise stated, the tolerance of the profile is $\pm 0.5\text{mm}$.

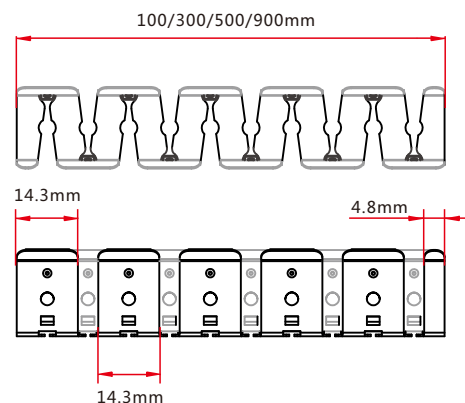
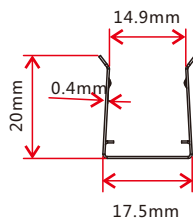
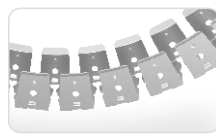


4.8 Curve Stainless Steel Profile



Model: NE-SQ-RGB-CH

Note: Unless otherwise stated, the tolerance of the profile is $\pm 0.5\text{mm}$.



5. Packaging

Packaging Method



Plastic Plate



White Box



Carton



Packaging Detail

Light Length	White Box Dimension (cm)	Carton Dimension (cm)	Numbers of White Box	Carton Weight (kg)
<4.5m	39*5.2*50	52*41*28	5	<8
5-8m	51*5.2*62	64*53*17.5	3	6-9
5-8m	51*5.2*62	64*53*28	5	9-14
10m	60*3.7*71	73*62*20	5	17
15m	68*5.2*79	81*70*12.5	2	11

6. Appendix

6.1 Certificate

Certificating Type	Testing Organization	Certificate Serial Number	Report Reference
UL 2108	UL	20160726-E360029	E360029-20130322
CE-EMC	SGS	SZEM1702001259LMV	SZEM160600421302

6.2 Third-Party Test Report

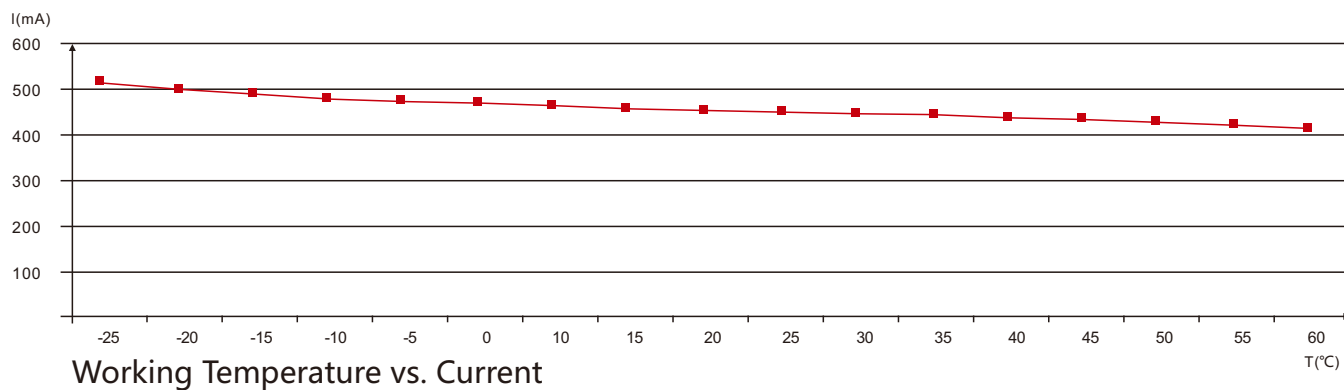
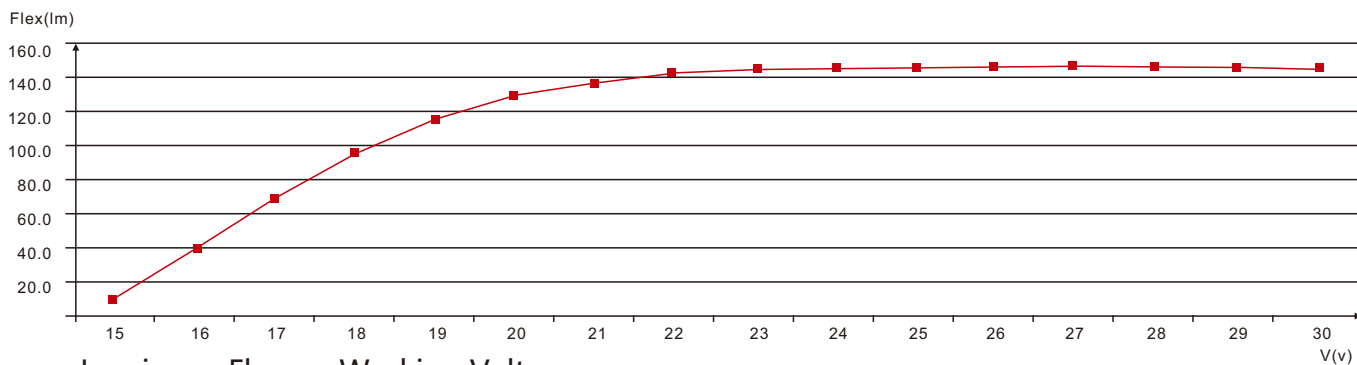
Testing Item	Testing Organization	Report Number
RoHS	SGS	CANEC1202163502 A01
IP68: Screw type	TUV SUD	68.140.12.136.02
IP68: Clasp type	SGS	GZES140200135301
		GZES140200135401
		GZES140200135501
		GZES140200135701
		GZES140200135801
IPX8: Molding type	SGS	SZES141200357301
		SZES141200357401
		SZES141200357501
IPX8: Snap type	SGS	GZES160600792031
Flame retardant	TUV SUD	68.140.13.068.01
UV@340nm: Light	AOV	A002R130308065—1R01
UV@340nm: PVC	AOV	A002R130308065—2R01

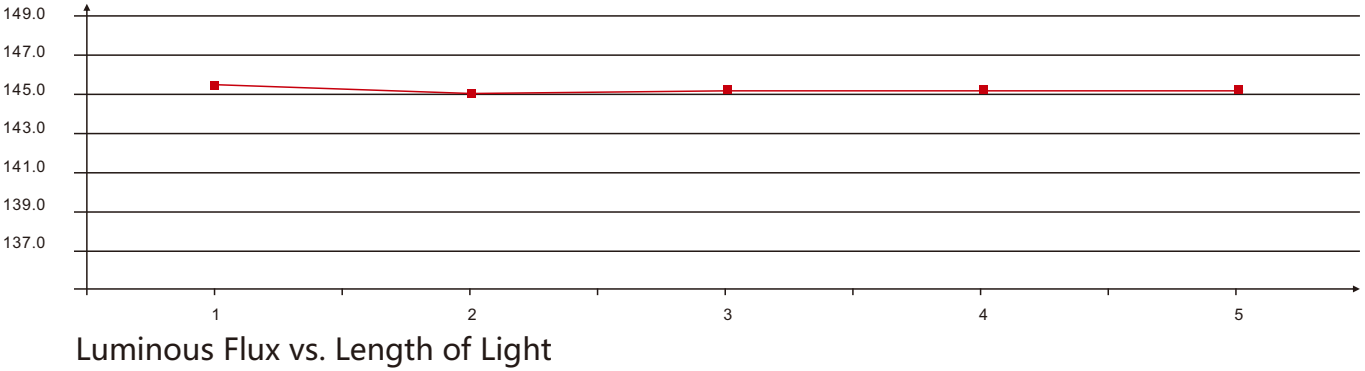
>>Note: The testing reports and certificates are available from the related official website.

6.3 Reliability Test of Light

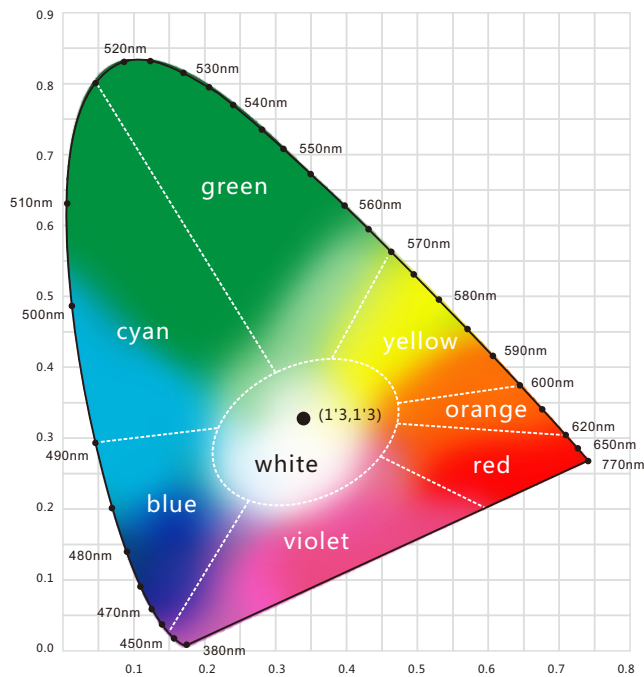
TESTING ITEM	PERFORMANCE	STANDARD/REFERENCE VALUE/DESCRIPTION
PHOTOMETRIC TESTING	Spectrum Analysis	IES LM 79 (lumen, CCT, CRI, XY, SDCM, wave length)
	Photometric Distribution	IES LM 79(lumen intensity distribution & Lux diagram)
	Lumen Maintenance & Life Time	IES LM84 & IES TM28
TEMPERATURE RISE TESTING	Normal Temperature Test	UL1598 & UL2388 & IEC60598-1 & IEC60598-2-21
	Abnormal Operation Test	UL1598 & UL2388 & IEC60598-1 & IEC60598-2-21
MECHANICS & PHYSICS TESTING	Bending Test	Manufacturer-defined, 500 cycles
	Swing Test	UL2388, >750 cycles
	Tensile Test	Manufacturer-defined, > the weight of light in
	Twist Test	maximum connection length with both ends feed
	Ball Impact	Manufacturer-defined, >200 cycles
	IK07 IK08	UL1598 & UL2388 & IEC60598-1 & IEC60598-2-21 IEC62262
WEATHERING TESTING	Swimming Pool Water Immersion Test	GB9667, PH6.8-7.6, free chlorine 0.3-0.6mg/L
	Sea Water Immersion Test	IEC60598-1, Salinity 4%
	Salt Spray Test	IEC68-2-11
	Outdoor Exposure	Manufacturer-defined
ENVIROMENT TESTING	Flame Resistant Test	UL94
	UV Exposure Test	ASTMG 154 , ISO 4892-3 , UVA@340nm
	IPX5 IPX6 IPX7 IPX8	IEC60529
ENDURANCE & THERMAL TEST LAB	Temperature Shock Test	Manufacturer-defined , -40°C-60°C (typical temperature range)
	Constant Temperature Test	Manufacturer-defined , 70°C (typical temperature)

6.4 Figures of Typical Characteristics

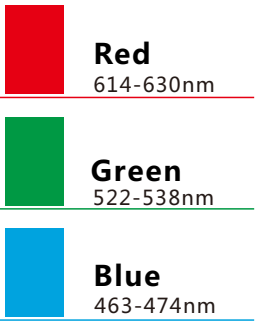




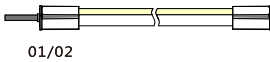
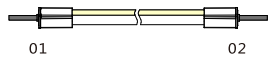
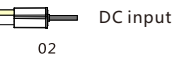
6.5 Wavelength of Colour Light



Light Color



6.6 Loading Chart

Type.	Rated Power /m	Power Supply											
		35w	60w	75w	80w	100w	120w	150w	120w	150w	185w	240w	320w
NE-SQ-RGB	8w	3.5m	6m	7.5m	8m	10m	12m	15m			18.5m	24m	30m
	12w	2m	4m	5m	5m	6.5m	8m	10m			12m	16m	20m
	15w/16.5w	1.5m	3m	3.5m	4m	4.5m			5.5m	7m	9m	10m	
	22w	1m	2m	2m	3m	3.5m	4m	5m			6.5m	8.5m	10m
Energizing Way		DC input  01/02							DC input  01  02 DC input				

Note : 1. These are the light maximum recommended running length subject to selected power supply.
2. For example: It is recommended to use one 80W power supply loading maximum 8m light (8w/m) or maximum 5m light (12w/m) by energizing the light one end.